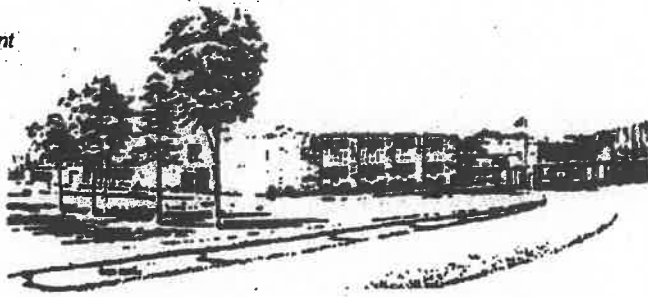


BOARD OF EDUCATION
DR. MICHAEL CELOTTI, *President*
TODD MALBON, *Vice President*
AMY GADDOR
DANA GILBO
ERICA KAZLO
BENJAMIN WINTERS



ADMINISTRATION
WILLIAM J. LARROW, *Superintendent*
CARRIE LANGEY, *Elementary Principal*
ALISON BURCH, *Secondary Principal*
KRISTINE ALLEN, *CSE Chairperson*
ERIN GILBO, *Business Manager*
VALERIE MILDON, *District Treasurer*
JOSEPH KAZLO, *Supt. Of Bldgs,
Grounds & Transportation*
BRIAN CROSS, *Athletic Director/
Dean of Students*

Moriah Central School District

39 VIKING LANE PORT HENRY, NEW YORK 12974 (518) 546-3301 FAX: 546-7895

August 18, 2021

Dear Parents and Legal Guardians,

As we approach the anticipated reopening of our school, I would like to highlight a few areas of importance to help you plan accordingly. The start date for all students will be Tuesday, September 7, 2021. All students are required to attend school in person. The school doors will open at 7:45 A.M. and there will be adequate supervision outside and inside the school building. Due to the increased levels of COVID-19 we will limit parents and visitors into the school unless there is an emergency or a planned meeting. Staff will be available to ensure all younger children get to their classrooms. Dismissal times for students in PreK-6 will be 2:15 pm and high school at 3:00 pm.

Students riding the bus will enter the school through the Central Office doors and participate in daily hand sanitizing procedures. High school students driving or being dropped off will enter through the high school doors and the elementary students being dropped off will enter through the back elementary gym doors.

A mask will be required at all times when riding the bus. Please provide your child with a mask that he or she has become comfortable wearing. No child will be denied busing if they forget to bring a mask from home, the District will provide a mask at that time for the bus ride. The District will also provide masks as needed to students who may need them. Masks should be made of cloth and should be washed daily, air drying is the preferred method. Please be aware that masks will be a big part of your child's day, masks must be worn on all bus trips, when transitioning in the halls and during class instruction. Students will be allowed to remove their masks during meal times, during classroom mask breaks and while outside. Classrooms have been set up to ensure student's desks are 3-6 feet apart so students are socially distanced while in class.

Once again this year, the District will be offering free breakfast and lunch to all students through a program called Community Eligibility Provisions. Elementary students will be eating breakfast in their classrooms and will rotate into the cafeteria as much as possible for lunch. High school students will be eating breakfast in their homerooms and lunch in the cafeteria and will follow social distancing guidelines when this occurs.

ATTENDANCE IS A KEY FACTOR IN ACADEMIC SUCCESS

Please keep in mind that students will only be allowed one pick up and drop off location and that we cannot accept bus notes based on seating arrangements for students on the buses. Seating charts need to be consistent and accurate in case contact tracing is needed for a confirmed case of COVID-19.

Please refer to the handout included in this mailing that pertains to a weekly screening process, COVID-19 Rapid and PCR testing in school. Please read the letter, watch the short videos and provide consent for your child/children to participate in this process.

Also, included in this mailing you will find condensed guidance information for both elementary and high school settings. If you have any questions please feel free to reach out to our COVID-19 website address at mcscovid@moriahk12.org and share your questions that will be answered in a timely manner. Last year, we did an amazing job working together during a difficult time. Please continue to be patient and understanding as guidance will continuously change throughout the school year. I would like to thank everyone who helped in the reopening process and all the parents that have asked questions. We are all in this together, stay safe and enjoy the last few weeks of summer.

Respectfully,

A handwritten signature in black ink, appearing to read "William J Larrow". The signature is fluid and cursive, with the first name "William" and last name "Larrow" clearly distinguishable.

William J Larrow
Superintendent of Schools



MORIAH JR/SR HIGH SCHOOL REOPENING FRAMEWORK

The Moriah JR/SR High School will look different this year, as we adapt to learning during COVID-19 regulations. We feel we can be very successful as we work to deliver quality education in a setting that has student health as our priority.

Required Components of Moriah JR/SR High School Reopening Plan

- Students and staff will wear masks continuously, except when outdoors or when eating meals or mask breaks.
- COVID-19 testing at school, isolation, and quarantine as required by the local health department following CDC and state guidelines.
- Daily cleaning and disinfecting protocols will be implemented.
- Shared books and supplies will be minimized and disinfected regularly.
- Parents/guardians will not be allowed in the building unless there is an emergency or have an appointment.
- School visitors will be restricted to those required for school business.
- Students and staff will be trained on proper hand hygiene practices. Students will apply sanitizer when entering/leaving classrooms throughout the day.
- In the event a teacher takes a class outside, students must continue to wear a mask until they get to the teaching location. Masks may be removed once the students are at the teaching location.
- Staff and students will participate in a weekly screening process, additional information will be coming on this process.

Academic/Instructional Parameters for Reopening:

- Daily academic instruction is planned on-site. Full time in person instruction only at this time.
- Teachers will continue to utilize Google Classroom.
- The district will assign individual art/classroom supplies to students when possible.
- Physical Education and chorus will use 3-6 feet distancing while participating in activities that require aerobic activity and result in heavy breathing, or while singing. Masks will be worn during this time unless the students are outside where masks can be removed.
- Classrooms will be arranged using a 3-6 foot rule for social distancing.

General School Information

- The building will not be open to students until 7:45 a.m. Upon arrival, students may go and get breakfast and then go directly to their first period class.
- Students will utilize the cafeteria, 6 feet apart while eating.
- Hallway traffic will be one-way, where possible, with appropriate signage.

- Teachers will be encouraged to have windows open and/or instruct classes outdoors, when possible.
- School day ends at 3:00 p.m.
- Students in grades 7-11 can no longer leave early if they have a scheduled study hall at the end of the day. Students will be required to utilize this time for homework completion and receive extra help as needed. Students will be required to remain in school until 3:00.

Transportation

- Masks will be required on school buses at all times.
- Students will be assigned seats on the bus, social distancing where possible.
- Members of the same household/family will sit together on the bus.
- Parents are encouraged to transport their children to and from school if possible.
- The high school student drop-off location is the high school office doors.
- Parents/guardians will not be allowed to accompany their children into the building.
- Bus notes will not be possible. Due to seating capacity, resulting from social distancing requirements, we are not able to accommodate "bus notes" or changes from one bus to another. Parents will supply a single address for pick up and a single address for drop off.

Athletics

- Athletes must wear a mask while indoors, once an athlete goes outside the mask can be removed.
- Spectators will be required to wear masks at all indoor events.
- Spectators will not be required to wear masks during outdoor events.

Vaccinations

- Encourage all eligible students and staff to be vaccinated.

Shift to Virtual Learning in the Event of School Closure

- In the event school buildings are closed, all instruction will be provided virtually.
- Students will follow their in-school schedule at home while teachers will be providing live instruction.
- Students and staff attendance will be taken daily.



MORIAH ELEMENTARY REOPENING FRAMEWORK

The circumstances we all face require us to be flexible, understanding, and committed to helping our students move forward.

Health and Safety Components of Moriah Elementary Reopening Plan

- Students and staff will wear masks continuously, except when outdoors or during mask breaks and meal times.
- Staff and students will participate in a weekly screening process. Additional information will be coming on this process.
- Contact tracing and coordination will be completed by the local health department following state guidelines.
- Daily cleaning and disinfecting protocols will be implemented.
- Shared books and supplies will be minimized and disinfected.
- Parents/guardians will not be allowed in the building unless there is an emergency.
- School visitors will be restricted to those required for school business.
- Students and staff will be trained on proper hand hygiene practices.

In-School/On-Site Student Experience

- There will be no remote option this year for students. All students are expected to be in person for learning.
- The building will not be open to students until 7:45 a.m. Upon arrival, students will go directly to the cafeteria, grab breakfast, then go directly to their classrooms.
- Students will utilize the cafeteria and classrooms for lunch.
- Classrooms will be arranged using a 3-6 foot rule for social distancing.
- Hallway traffic will be one-way when possible, with appropriate signage.
- Classes moving within hallways will be regulated to reduce the number of students in the hallway at a given time.
- Teachers will be encouraged to have windows open and/or instruct classes outdoors, when feasible.
- Band and chorus will be provided and will follow the 6 feet social distance rule.
- Physical Education will be provided and will follow social distance guidelines, 3-6 feet with masks on and socially distance as best as possible. Outside no masks, socially distance as much as possible.
- The pool will reopen, students will be allowed to change utilizing social distancing and reduced numbers in the locker rooms at one time. Masks will be worn when students are not in the pool.
- Dismissal times will go back to the traditional 2:15 dismissal time for all students Pre-K-6.
- Teachers will continue to familiarize students with Google Classroom.

Transportation

- Masks will be required on school buses at all times.
- Students will be assigned seats on the bus to ensure appropriate social distancing to the best of our ability.
- Members of the same household/family will sit together on the bus.
- Parents are encouraged to transport their children to and from school as feasible.
- The elementary student drop-off location will be the same as last year, back elementary gym doors. Students will participate in hand sanitizing prior to entering the building. Doors open at 7:45 a.m.
- Elementary parent pick up will be the same as last year, pick up location will be the front doors near the Central Office. Pick up time will begin at 2:15 p.m.
- Parents/guardians will not be allowed to accompany their children into the building. School staff will be available to walk students to their rooms.
- BUS NOTES will not be possible. Due to seating capacity, resulting from social distancing requirements, we are not able to accommodate "bus notes" or changes from one bus to another. Parents will supply a single address for pick up and a single address for drop off.

Shift to Virtual Learning in the Event of School Closure

- In the event school buildings are closed, all instruction will be provided virtually.
- Students will follow the in-school schedule at home with a combination of live and/or recorded teacher lessons, online group work, or small group instruction. Time spent on instruction will vary by grade level, however students will engage in daily learning.
- Students and staff attendance will be taken daily.

MORIAH ELEMENTARY IS MOVING FORWARD...TOGETHER!



Personal Protective Equipment (PPE)

- Students and staff will wear masks continuously indoors.
- The district will have reusable masks available for staff and students as needed. Students and staff may also use their own, school appropriate, masks.
- Teachers will schedule mask breaks for students in the classroom, following distancing guidelines.
- Students will not be required to wear a mask when outside, during meals or snack times.



Health & Safety

- Students that develop symptoms during the school day will be immediately isolated and sent home. Parents must have a plan in place to pick up their students immediately to reduce further exposure to others.
- Healthy hygiene practices will be taught and retaught in school settings for both students and staff.
- All students will be required to maintain a minimum of 3-foot distancing while in school when moving throughout the building when possible.
- Student/staff movements will be minimized as much as practicable.
- The District will be utilizing a team approach to help with health and safety, staff may be needed in areas outside of their traditional duties to help wipe down high contact areas and help to ensure our reopening plan measures are taking place.
- Hand sanitizer will be available in classrooms for student/staff application.
- Use of shared materials will be minimized.
- Unvaccinated staff and students will be randomly selected to participate in weekly screenings. More information to follow on this process.



Cleaning Protocols

- All staff must ensure adherence to hygiene, cleaning and disinfections requirements as advised by the CDC and DOH, including "Guidance for Cleaning and Disinfection of Public and Private Facilities for COVID-19," and the "STOP THE SPREAD" poster, as applicable.
- Regular cleaning and disinfection of restrooms and high touch areas will be done throughout the day.
- Cleaning and disinfection protocols of exposed areas in the event an individual is confirmed to have COVID-19 are outlined in the containment plan.
- Students must enter school with a clean mask daily, and should wash their hands and mask immediately upon returning home from school.
- We must work together to provide consistent hygiene habits to and from school for the safety of all.



Technology and Communications

- All students will use their assigned chromebook, and are responsible to keep it charged, and report any problems with their chromebook to the school immediately.
- If families are experiencing problems with internet connectivity, or if there is no internet at home, contact the school to develop accommodations.
- Student data privacy and security will be maintained in compliance with Federal and State laws related to student technology use.
- Teachers will use Google Classroom or Seesaw as their primary platform if remote learning is necessary.
- The district strongly recommends that students use headphones when using chromebooks as it greatly improves sound quality and clarity.
- The district has created a dedicated email for all questions and concerns at mcscovid@moriahkk12.org
- District will use multiple media outlets to share information with parents and legal guardians throughout the school year.
- District will use Robocall to inform parents on important topics.
- Staff will communicate with parents and students through a variety of outlets including email, Schoology, Google Classroom, Zoom and Seesaw.



Transportation

- Masks must be worn at all times while riding on the bus.
- Students will follow their driver's instructions and maintain social distance when possible on the bus.
- Siblings/children who reside in the same household will sit together.
- All buses/vans that are used will be cleaned/disinfected daily. High touch surfaces will be cleaned between runs.



Food Service

- Food service for breakfast will consist of a "grab and go" model to ensure that all students are able to receive an individual, pre-packaged meal prepared in advance by kitchen staff. Pre-K will still eat breakfast as a class in the cafeteria, K-6 will go through the cafeteria line as they enter the building off the buses and eat in their classrooms. 7-12 students will also use a grab and go method and eat in their 1st period classroom/homeroom.
- Food service for lunch will consist of the high school students eating in the cafeteria, socially distanced. Elementary students will eat in their rooms and will rotate into the cafeteria as schedules are developed.



School Structures & Supports

- MCS will be in person Pre-K-12 for the 2021-2022 school year.
- Regardless of model, equity and access is a priority for all students.
- The District is working with the Adirondack Community Action Program (ACAP) to provide after school child care in the fall. More information will be shared at a later date as details are worked out.



Mental Health/Social Emotional Learning

- The district will identify students and families in need of additional support and resources, these services will be made available to address mental health, behavioral and emotional needs of students.
- Referrals to outside services and supports can be made by the school counselor, school social worker, or school psychologist.
- Evidence-based programs will be available on a referral basis for individuals/small groups of students with identified needs consistent with response to trauma as identified by caregivers or students.
- MCS Referrals for school based counseling and support services can be made by the teacher or parent by contacting the school.

Greetings Moriah Central Parents and Families,

Are you ready for the 2021-2022 school year? We are!

We have done a remarkable job of dealing with the challenges of COVID-19. Yet it looks like COVID will keep us on our toes for a while longer.

Moriah Central has been working with the Essex County Health Department, BOCES leaders, and area school superintendents all summer. Our goal is to return to full in-person learning with ***fewer disruptions to learning, sports, activities, and home life.***

Our District, in agreement with the Essex County Health Department, is following the guidance given by the New York State Education Department (NYSED), CDC and American Academy of Pediatrics. Specifically,

Health and Safety Guide for the 2021-2022 School Year, NYSED;

Guidance for COVID-19 Prevention in K-12 Schools, CDC;

COVID-19 Guidance for Safer Schools, American Academy of Pediatrics.

VACCINATION

Eligible? Please get vaccinated. It's the best way to safely get students to full in-person learning and activities. The Pfizer vaccine has received full FDA approval for two doses, three weeks apart, in people 16 and older. It remains available under emergency use authorization for adolescents ages 12 to 15.

MONITORING OF COMMUNITY TRANSMISSION

Our district meets with Essex County weekly to stay on top of our local risk.

WEARING MASKS

Our district is requiring universal masking for all indoor areas. This means everyone, regardless of vaccination status, is masking. This includes all indoor areas - classrooms, hallways, and buses.

PHYSICAL DISTANCING

Our school is making efforts to keep a 6' distance between people in school, whenever possible. This prevents students from being close contacts of anyone that becomes sick.

SPORTS AND EXTRACURRICULAR ACTIVITIES

Our district is following the same school-day policies and procedures for athletic and extracurricular activities.

TEMPERATURE AND DAILY HEALTH CHECKS

Please do a health check at home. Do not send a sick child to school. Do reach out to arrange for COVID testing. We now have a free school-based testing option!

SCREENING TESTING

Our district is offering free screening testing to unvaccinated faculty, staff, and students following CDC's recommendations. *Testing is done at school with results in 24-48 hours!* Click here to watch a short video about this test or visit <https://vimeo.com/565777507/db8a04ad90>

SYMPTOMATIC TESTING

Free rapid testing will be available for faculty, staff, and students who have COVID-19 symptoms. *Testing is done at school with results available in 15 minutes!* Click here to watch a short video about this test or visit <https://www.youtube.com/watch?v=MqICkkOaNKo>

ISOLATION, CONTACT TRACING AND QUARANTINE

Following new guidance, students identified as close contacts in the K-12 school setting don't need to quarantine if everyone was wearing masks. This applies to both vaccinated and unvaccinated students.

Doing all these things makes in-person learning as safe as possible.

The new school-based testing options will relieve the burden on families to find a test and wait for results. These tests are free, offered right at school, easy and painless! No more unnecessary doctor's visits or lengthy wait times for test results.

Links to complete consent forms for screening and diagnostic testing will be shared soon.

William J. Larrow
Superintendent of Schools
Moriah Central School District

Linda L. Beers, MPH
Director of Public Health
Essex County Health Department

Moriah Central School COVID-Related Procedures for the Start of the 2021-22 School Year

One thing that we can all agree upon is that procedures and strategies change quite frequently when dealing with COVID-19. Listed below are current strategies and procedures that MCS will follow for the start of the school year:

Vaccinations

- Encourage all eligible faculty, staff and students to get vaccinated.

Monitoring Community Transmission

- MCS will rely on the Essex County Health Department to assist with this as needed.

Wearing Masks

- Masks are required to be worn inside by all employees and students.
- Masks are not required outside.
- Mask breaks will occur as needed.
- Masks may be removed during meals.

Physical Distancing

- Students will remain separated in classrooms at a minimum of three feet, six feet is preferred.
- Students and staff will remain at six feet distance while eating.

Transportation

- All employees and students must wear a mask at all times on the bus.
- Physical distancing will occur as much as possible.
- Siblings will be expected to sit together on the bus.
- Only one pick up and drop off location will be allowed due to possible contact tracing.

Sports and Extracurricular Activities

- Masks are required for all indoor sports.
- Masks are not required while participating outside.
- COVID screenings for unvaccinated athletes and coaches may be requested based on the county COVID-19 transmission rate, the District will work closely with the Essex County Health Department if this screening process is required.

COVID Screening/Testing to Promptly Identify Cases, Clusters and Outbreaks

- MCS will rely on the Essex County Health Department to assist with this as needed.

Temperature and Questionnaire Screening

- There will be no morning screening requirement for staff and students prior to entering the building. The act of arriving at school is the employee and student way of attesting they are not sick and do not have COVID symptoms.

Good Handwashing and Respiratory Etiquette

- Everyone is encouraged to wash their hands regularly.
- Everyone is encouraged to cover a cough and/or sneeze.

Staying Home When Sick and Getting Tested

- Employees and students should not report to school if they are sick or experiencing COVID related symptoms.
- Employees and students should get tested if they are experiencing related symptoms.

Contact Tracing, In Combination with Isolation and Quarantine

- MCS will rely on the Essex County Health Department to assist with this.

Currently, the District is waiting for finalized guidance from the Essex County Health Department pertaining to weekly screenings, rapid testing and PCR testing. Once this information has been received a more detailed explanation of the District's reopening procedures will be mailed to you.

Fall Sports Protocols and Procedures
Football/Soccer/Cross Country/Swimming

All coaches must keep a daily attendance log of athletes that attend practice.

All athletes must wear a mask at all times while indoors. Coaches will be responsible for enforcing this rule while indoors.

All athletes must social distance when on the bench, during drills that allow for this to happen and on the bus as much as possible. Masks must be worn at all times on the bus.

During the summer months, all athletes must come dressed and ready for practice. School year guidance for changing will be coming at a later date.

All athletes must use hand sanitizer prior to entering the practice field, games, and buses.

All athletes must bring their own water bottles, drinks cannot be shared at any given time. Clothing is another item that cannot be shared at any time.

Game and practice balls will be disinfected prior to use, ball boys or girls will be given cleaning materials to use during practices and games to disinfect as the game or practice goes on.

Fans will be allowed to attend games. All indoor events will require masks no matter spectator vaccination status. Social distancing will be encouraged for all fans to keep separated. Family members are encouraged to sit together as they are considered direct contacts who reside with the athlete on a daily basis.

Fans are encouraged to bring their own chairs and beverages to the games to help in social distancing.

Transportation - Busing will be available for all scrimmages and games. Athletes will be separated on the bus as much as possible, masks are required for all bus trips.

When possible, try to work with the same partners every day. This will be very useful if contact tracing is needed for a positive COVID-19 case.

All coaches will meet with the Athletic Director prior to review all protocols and best practices in preventing the spread of COVID-19 through athletics.

All student athletes will be educated on the proper protocols used to stop the spread of related to COVID-19 symptoms.

Vaccinations are encouraged for all athletes who are age appropriate.

Depending on the transmission rate of our county, unvaccinated athletes may be subject to weekly testing, additional information relating to this topic will be coming from the Essex County Health Department.

Concussion baseline testing is still required for all contact sports, coaches please plan to get your baseline testing done as soon as possible.